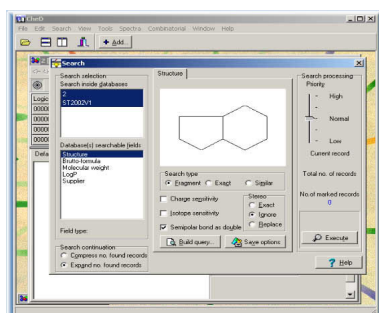


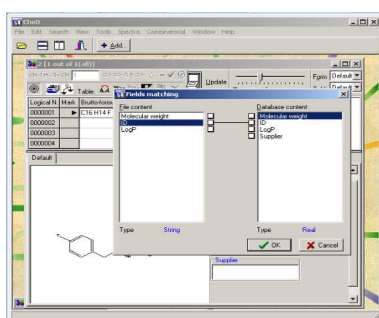
Search by structure

In the search dialog: the searched (sub)-structure can be drawn, or loaded from MOL file.



Search by a list of text values

CHED database can be searched by a list of text values, for example compound id numbers.



Format of text *.lst files:

Simple one-column text *.lst file:

E

```
TV0000001  
TV0000002  
TV0000003  
TV0000004
```

Tab-delimited text *.lst file with multiple columns field names

E

```
IDNUMBER AMOUNT Molecular weight  
TV0000001 200 708.68  
TV0000002 200 418.32  
TV0000003 200 391.51  
TV0000004 200 390.43
```